

Spraying  
Pouring  
Coating



Elastisol Benelux BV

Location

Wijchen, The Netherlands

Telephone

+31 (0)24-6451185

Fax

+31 (0)24-6414690

Internet

[www.elastisol.nl](http://www.elastisol.nl)

Email

[info@elastisol.nl](mailto:info@elastisol.nl)

What we do

Supplies and possible repairs of:

Metering Units

Guns (spray, pour & coating)

Mixing Heads

Barrel Pumps

Components

Spare Parts

Moulds & Tools

Supply Hoses

Accessories

## Gun

## C M g u n 1

Manual page 1, 2

Parts Identification page 3, 4, 5, 6, 7

Partlist page 8

## Important: Warnings & Instructions

The CMgun1 has a high-pressure mixing head.

Always relief pressure and lock the gun by the lock screw before flushing or servicing any part of the pistol. Whenever you stop spraying or pouring, close the valves (A). This is to reduce the risk of serious bodily injury from fluid injection and splashing in the eyes or on the skin.

This gun has a 2200 Psi (150 Bar) **MAXIMUM WORKING FLUIDPRESSURE**. Be sure that all equipment and accessories are rated to withstand the maximum working pressure of this gun. DO NOT exceed the maximum working pressure of any component or accessory used in the system.

The **MAXIMUM WORKING AIRPRESSURE** for the working (open/close) of the gun is 70 Psi (5 Bar). DO NOT exceed the maximum working pressure the needle can break while the fluid is coming out the gun.



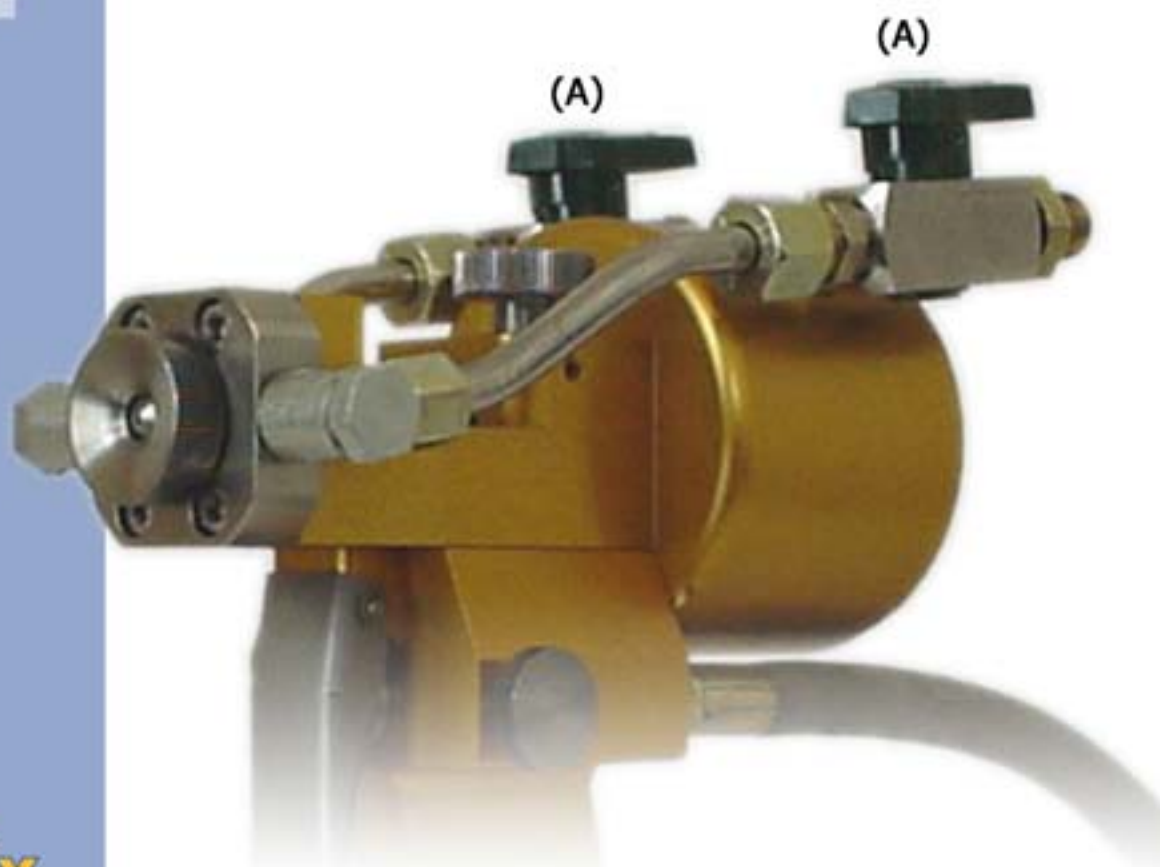
Before starting and after produce grease the needle with special oil. When the needle sticks during produce, grease it to.

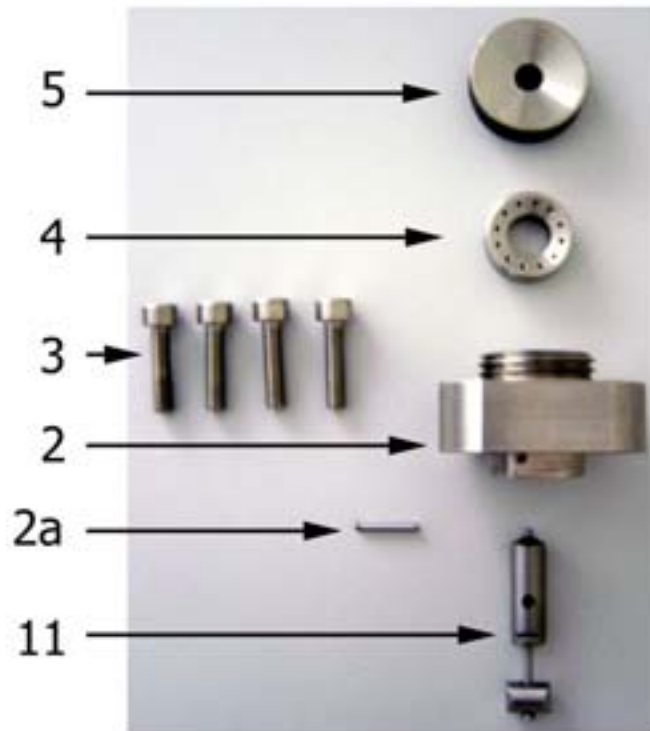


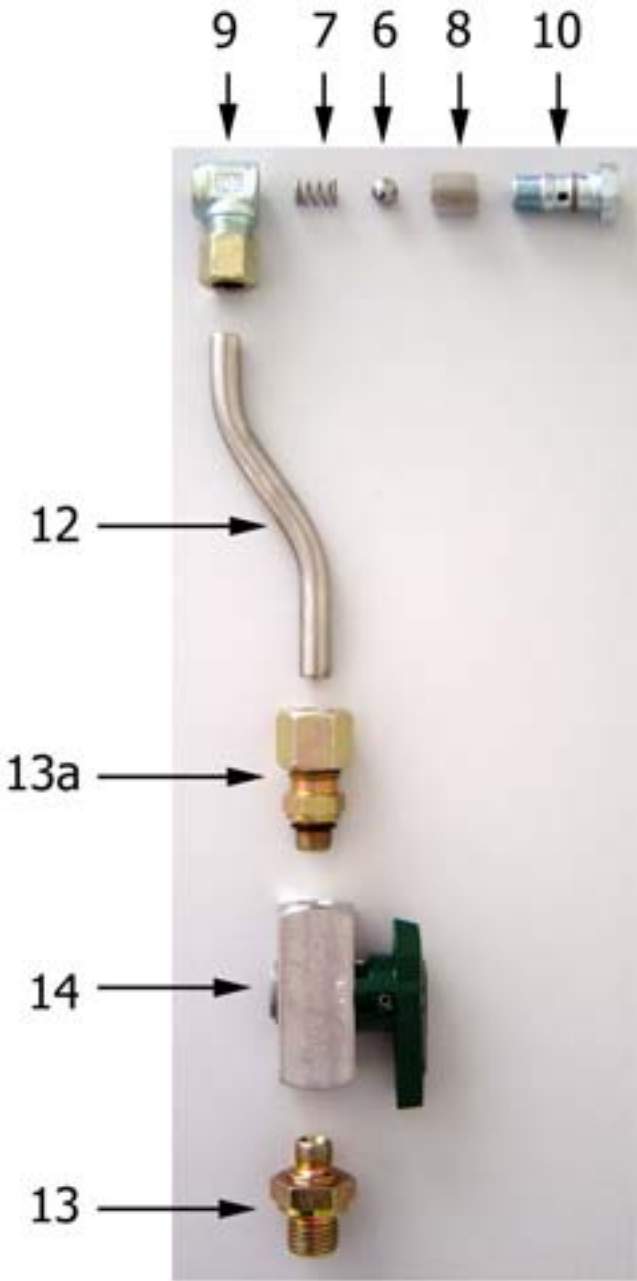
### Important directions for use

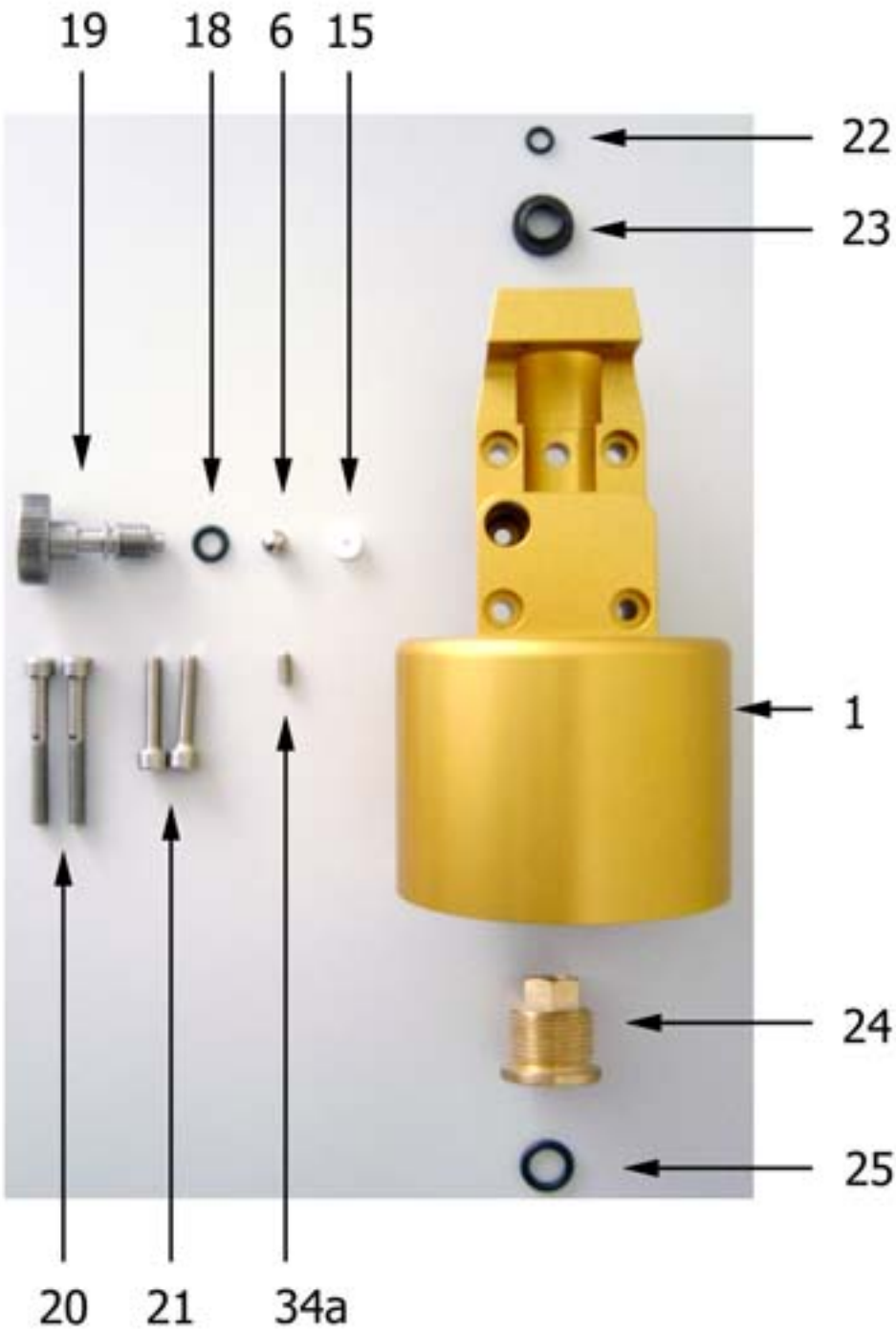
The gun is self-cleaning, no flushing solvent is necessary. Before and after using the gun, grease the needle with special oil. When open, close the valves (A). Bring the oil on the needle meanwhile you let the needle to and fro, by pulling the trigger. Also when the needle sticks during using, close the valves (A) and grease the needle. When the needle sticks and is fixed you can try to heat the needle on the front of the gun by a lighter.

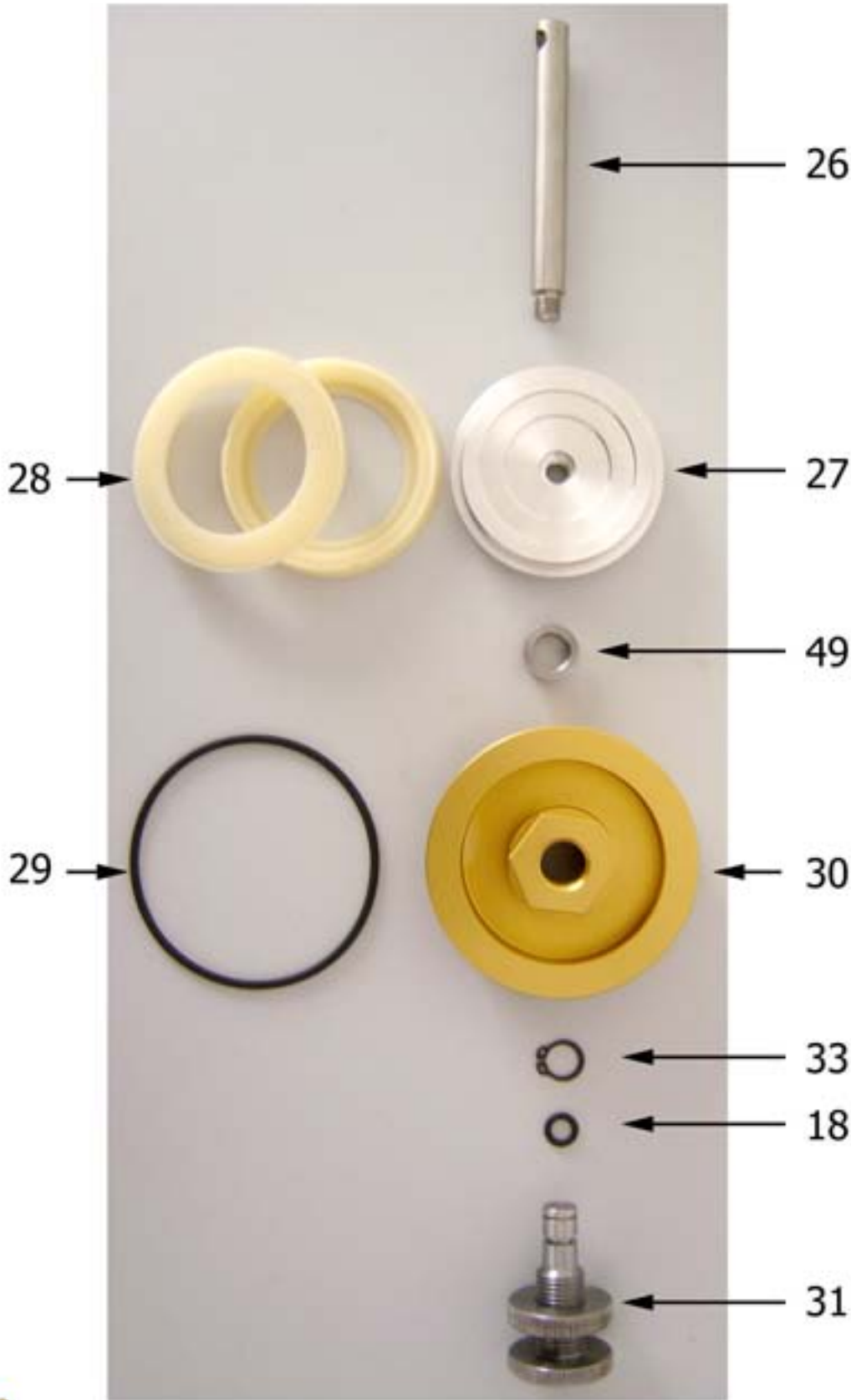
**NEVER HEIGHTEN THE AIRPRESSURE;** the needle can break.

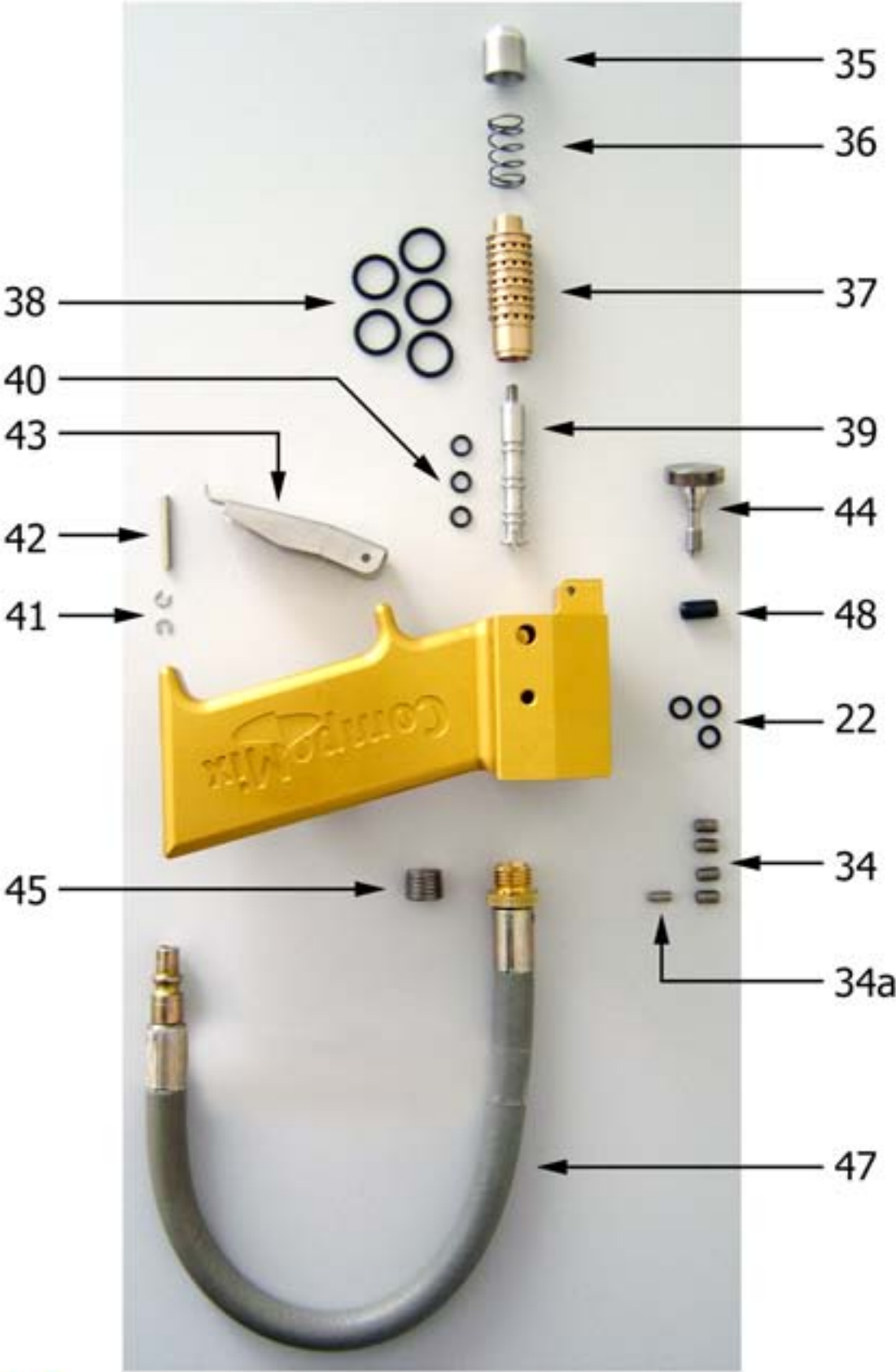












## Gun

## CMgun1

Reference number	Partnumber	Description	QTY
1	CMgun1-01	gunbody (upper)	1
2	CMgun1-02	gunblock	1
2a	CMgun1-02a	lock-up needlehouse	1
3	CMgun1-03	allen screw	4
4	CMgun1-04	diffuser	1
5	CMgun1-05	air cap spray	1
6	CMgun1-06	valve ball	3/4
7	CMgun1-07	spring	2
8	CMgun1-08	filter	2
9	CMgun1-09	banjo-holder	2
10	CMgun1-10	banjo	2
11	CMgun1-11	needlehouse, needle, holder	1
12	CMgun1-12	pipe connection	2
13	CMgun1-13	coupling	2
13a	CMgun1-13a	coupling	2
14	CMgun1-14	valve	2
15	CMgun1-15	valve ball seat	1/2
16			
17			
18	CMgun1-18	O-ring	2/3
19	CMgun1-19	valve spindle	1/2
20	CMgun1-20	allen screw	2
21	CMgun1-21	allen screw	2
22	CMgun1-22	O-ring	4
23	CMgun1-23	stripper	1
24	CMgun1-24	bearing	1
25	CMgun1-25	O-ring	1
26	CMgun1-26	piston shaft	1
27	CMgun1-27	piston	1
28	CMgun1-28	piston seal	2
29	CMgun1-29	O-ring	1
30	CMgun1-30	end cap	1
31	CMgun1-31	piston stop adjustment screw	1
32			
33	CMgun1-33	safety retainingring	1
34	CMgun1-34	hexagon socket set screw M5	4
34a	CMgun1-34a	hexagon socket set screw M4	2
35	CMgun1-35	button	1
36	CMgun1-36	spring	1
37	CMgun1-37	airvalve	1
38	CMgun1-38	O-ring	5
39	CMgun1-39	slider	1
40	CMgun1-40	O-ring	3
41	CMgun1-41	retaining washer	2
42	CMgun1-42	trigger shaft	1
43	CMgun1-43	trigger	1
44	CMgun1-44	trigger lockscrew	1
45	CMgun1-45	sealscrew	1
46	CMgun1-46	gunbody (lower)	1
47	CMgun1-47	airhose	1
48	CMgun1-48	dowel	1
49	CMgun1-49	housing piston stop adjustment screw	1